

# PORTWEST®

**MANUFACTURER :** Portwest, Westport, Co. Mayo, Ireland  
*All declarations of conformity for Portwest products are available at [www.portwest.com/declarations](http://www.portwest.com/declarations)*

CE0194  
CE0321  
CE1105

**EC type examination of notified body that is involved with the design stage and production control phase are performed by:**  
INSPEC International Ltd., 56, Leslie Hough Way, Salford, Greater Manchester, M6 6AJ, United Kingdom .  
**Notified Body : 0194**  
**SATRA Technology Centre Ltd,** Wyndham Way Telford Way, Kettering, Northamptonshire, NN16 8SD, UK  
**Notified Body : 0321**  
**CCQS UK Ltd** Level 2, 5 Harbour Exchange Square, London, E14 9GE, UK **Notified Body : 1105**

## EN USER INSTRUCTIONS

**HARNES RANGE**  
**STYLE: FP08, FP12, FP11, FP13 & FP14, FP19, FP18, FP15, FP10**  
**PLEASE READ THESE INSTRUCTIONS BEFORE USING ANY EQUIPMENT**  
All these products comply with the requirements of Regulation (EU 2016/425) and with applicable standards of the PPE EN361, EN358, EN813, EN1497

**PURPOSE**  
The Harness for fall arrest purpose must be used with compatible PPE like Fall Arrester, Energy Absorber, and attached to an anchorage point capable of arrest a free fall and limits the impact force on the body of the user during fall arrest.  
The lower side positioning anchorage points of a waist belt or a harness with a waist belt must be used solely for connecting to a work positioning system (EN358) and never to a fall arrest system. The connection to the anchoring point or to the structure must be done using an EN 362 connector.

**HOW TO CORRECTLY PUT THE FULL BODY HARNES ON**  
Full body harness is to be adjusted using the straps and insert buckles to the individual figure of the user. If not, the straps and insert buckle have to be adjusted to the right position. The correct way to put the harness on shall be as per the step by step instruction below. After finished putting on the harness, it is necessary to check every strap and buckles to ensure they are fitted in the right position. Once the straps loosen, the user should adjust the strap with buckle immediately to prevent from falling.

**D1 REFER TO DIAGRAM AT BEGINNING OF USERSHEET**

- D1A** Spread the shoulder straps apart, grasp the harness by the D-ring.  
**D1B** Put on the shoulder straps one after one, take care do not twist them.  
**D1C** Fasten the chest strap and tighten for best fit. Do not over tighten.  
**D1D** Buckle up both the right and left leg loops accordingly and tighten to fit.

**HOW TO CORRECTLY PUT THE WORK POSITIONING BELT ON**  
It is essential to try on and adjust model FP08 before use remembering to anticipate the type of clothing you expect to be wearing. It is recommended that before using FP08 the user should carry out a suspension test in a safe place to ensure that the FP08 is the correct size, has sufficient adjustment and is of an acceptable comfort level for the intended use.

**D2 REFER TO DIAGRAM AT BEGINNING OF USERSHEET**

The waist belt should fit snugly around the waist.  
**D2A** The lateral side positioning attachment points of the belt must be used solely for connecting to a work positioning system (EN358 positioning lanyard) and never to a fall arrest system. Refer to diagram below for details.  
Correct way of attaching to the lateral attachment points on the belt by connectors.

**WARNING**  
The user is responsible to make sure they read, understand and follow all instructions in the care and use of this device as well as receive adequate training.  
Before and during use, consideration should be given as to how any rescue could be safely and efficiently carried out.  
Use of this product is reserved for competent personnel, who have gone through the proper training or who are operating under the supervision and instruction of a competent and experienced person.

**WARNING :**  
**ANY MODIFICATION TO AN ADJUSTMENT WILL MAKE THE DEVICE DANGEROUS FOR USE.**

- Do not use the products until you have read and fully understand the instructions.
- Regular checks should be conducted for signs of wear or damage before use.
- Before and during use, consideration should be given as to how any rescue could be safely and efficiently carried out.
- The equipment shall not be used outside its limitations, or for any purpose other than that for which it is intended.
- Certain medical condition may affect user safety ; if in doubt, consult your doctor.
- Any alterations or additions to the equipment without the Manufacturer's prior written consent, any dangers caused by this condition during the equipment utilization process will not be the responsibility of the Manufacturer.
- In the course of use, take all necessary steps to protect the system or component from hazards related to the operation (burns, cuts, sharp edges, abrasion, chemical attack, tangling, or twisting of the cable, webbing or rope, electrical conductivity, weather conditions, pendulum effect due to fall, etc).
- Depending on the type of the product, there are several possible uses :
- Harness with back anchorage point: fall-arrest safety for working at heights.
- Harness with back and chest anchorage point: same harness with back anchorage point + work positioning, safety when climbing ladder.
- Harness with belt anchorage point: fall-arrest safety according to type and anchorage points available, belt anchorage point for work positioning. In a work positioning system, the lanyard must be maintained tensioned and freedom movement must be limited to 0.6 m maximum.
- The connection of a fall arrest system to a full body harness (EN353-1, EN353-2, EN355, EN360) must exclusively be carried out using the upper dorsal, sternal or pectoral attachment points. These points are identified with a capital "A" when they are independent or "A/2" when 2 points have to be connected together.
- The lower side positioning anchorage points of a belt or a harness with a belt must be used solely for connecting to a work positioning system (EN358) and never to a fall arrest system.
- Before each use, the user must examine the equipment visually to ensure it is in perfect operating condition. It is important to check for deformation, corrosion, sharp edges and abrasive areas on the metal parts of the system or components. Similarly check for cuts, burns, broken wires, extensive wear, and change of color or rigidity in the textile parts of the system or components.
- The product performance may deteriorate under the following conditions e.g. excessively high temperature, the effect of sharp edges, chemical reagents, electrical conductivity, cutting, abrasion: UV degradation, and other climatic conditions.
- Store in a clean dry environment, avoiding direct sunlight, corrosive fumes, chemical substances or undue vibration.
- Always verify the compatibility of the product with the other components of the equipment. An incompatible connection between the attachment point and connectors can cause accidental disconnection, breakage, or affect the safety function of another piece of equipment.
- In extreme cases, the lifetime of the product can be reduced to one single use through exposure to for example any of the following: chemicals, extreme temperatures, sharp edges, major fall or load, etc.
- Equipment which is damaged or in need of scheduled maintenance must be tagged as "Do Not USE" and removed from service. Defects, damage, excessive wear, malfunction, and aging are generally not repairable.
- Model/type identification mark of the full body harness: The product marking is located on the right chest attachment point. This marking indicates that European standard number (The number of this European standard EN361 :2002) the manufacturer name, the manufacturing date and the first using date and the user name.



[WWW.PORTWEST.COM](http://WWW.PORTWEST.COM)

## HARNES RANGE

- STYLE:**
- FP08
  - FP11
  - FP12
  - FP13
  - FP14
  - FP15
  - FP17
  - FP18
  - FP19
  - FP10



- The potential lifetime of this product is as follows: up to 10 years from the date of manufacture for plastic and textile products. It is indefinite for metallic products.
- The actual lifetime is influenced by a variety of factors such as: the intensity, frequency, and environment of use, the competence of the user, how well the product is stored and maintained, etc.
- This product shall be examined every year by a competent person to ensure the safety and serviceability condition.

### MAINTENANCE AND STORAGE CARE

Do not expose the product to corrosive environments for prolonged periods. Organic substances and salt water are particularly corrosive to metal parts. When working in corrosive environments, more frequent inspection, cleaning and drying of the product is required. The equipment would be pack with polystyrene plastic material to prevent any item damage during transportation. The item may be cleaned with a mild detergent solution.  
Store in a clean dry environment avoiding corrosive fumes or chemical substances.  
If the Harness becomes wet, either from being in use or due to cleaning, it shall be allowed to dry naturally, and shall be kept away from direct heat.  
Modifications and repairs outside of Portwest facilities are prohibited.  
The personal protective equipment shall be examined every year. The periodic examination are only to be conducted by a competent person and strictly in accordance with the manufacturer's periodic examination procedure.

### STORAGE

Store the product in a ventilated place away from humidity.  
The product should be hung up by the rear D-ring, or placed loosely in a container.

### PERIODIC EXAMINATION

- Detailed recorded examinations should only be carried out by a competent person, appointed by the employer. Additionally, recorded interim examinations may be required where risks from harsh working environments exist which may affect safety functions of the device. These should be identified through risk assessment.
- The product does not require any special tools and equipment.
- Ensure that the periodic examination instructions for other components used in conjunction with any item are complied with European standards. These recorded examinations must be carried out at least every 12 months as a requirement of EN358 & EN361. However, the frequency of periodic examination is recommended taking account of such factors as legislation, equipment type, frequency of use, and environmental conditions.
- Periodic examination is essential for the safety of the user. This examination guarantees the efficiency and trouble-free operation of the system or component. Be sure to fill in and preserve carefully the descriptive sheet, making a note of any periodic checks, and periodic check shall be performed by competent person for periodic examination.
- Always make sure the product marking is present showing both the serial number and date of manufacture and that it matches your user instructions. If the numbers are not legible on the product body or do not match the user instructions DO NOT USE.
- The potential lifetime of this product is up to 10 years from the date of manufacture.
- The actual lifetime of a product ends when it meets one of the retirement criteria listed below, or when its system use is judged obsolete.
- Defects, damage, excessive wear, malfunction, and aging.
- The hardware elements for deformations, fractures, cracks, corrosion, deep pitting, sharp edges, cuts, deep nicks and evidence of excessive heat or chemical exposures.
- Inspect the Harness for wear, abrasion, cuts, frayed, missing or loose stitches, burns or signs of chemical attack.
- You do not know its full usage history
- It is at least 10 years old and made of plastics or textiles
- You have any doubt as to its integrity.
- If during the periodic examination any part is found not safe or faulty, please DO NOT USE it. Defects, damage, excessive wear, malfunction, and aging are generally not repairable.
- The actual lifetime is influenced by a variety of factors such as : the intensity, frequency, and environment of use, the competence of the user, how well the product is stored and maintained, etc.
- In addition to the inspection before and during use, a periodic in-depth inspection must be carried out by a competent inspector at least once every 12 months. The frequency of the in-depth inspection must be governed by the type and the intensity of use.
- To keep better track of the equipment, it is preferable to assign each piece of equipment to a unique user so that he will know its history.
- The results of inspections should be documented in an "equipment record". This document must allow recording of the following details: type of equipment, model, name and contact information of the manufacturer or distributor, means of identification (serial or individual number), year of manufacture, date of purchase, date of first use, name of user, all other pertinent information for example maintenance and frequency of use, the history of periodic inspections (date / comments and noted problems / name and signature of the competent person who performed the inspection).
- No repairs, modification or alteration can be carried out on the Harness. Destroy equipment to prevent further use.

### CLEANING & STORAGE

It is good practice to:  
Do not use bleach, solvents, petrol, or dye as they will affect the performance of the Equipment.  
The above cleaning instruction shall be strictly adhere to.

### LIMITATIONS OF USE

It is not intended for any other use. If unsure about the safe use of any item seek advice from a suitably trained and competent person or contact the manufacturer at the above address.

#### EXPLANATION OF MARKINGS

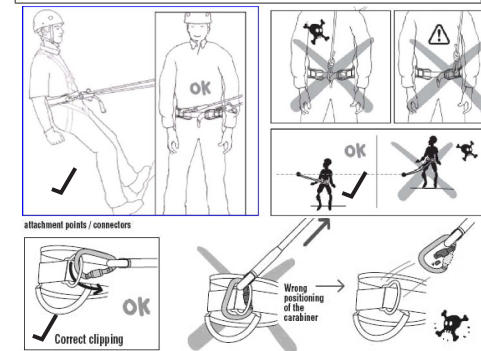
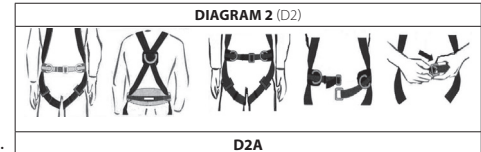
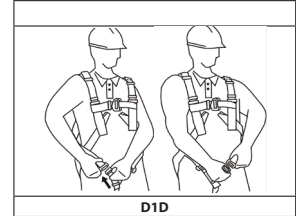
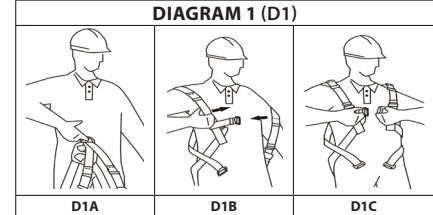
*EXAMPLE ONLY. PLEASE CHECK PRODUCT LABEL FOR FULL DETAILS*

#### TO BE COMPLETED BY SUPPLIER

- Manufacturer Logo;
- Model Code
- Product Name / Description of product
- CE Marking and Notified Body;
- European Standard number
- Fabric

- Manufacturer information:
- Caution, read instructions
- Serial number: Means of traceability
- Manufacturing date:
- Batch No.:
- To be completed by User**
- Purchasing date:
- First Use Date:
- User Name:

**D3**



#### EXPLANATION OF MARKINGS

*EXAMPLE ONLY. PLEASE CHECK PRODUCT LABEL FOR FULL DETAILS*

<b>1 PORTWEST</b>		<b>2 4 POINT HARNES</b>		<b>3 D3</b>	
<b>4 CE1105</b>		<b>5 EN813:2008 EN 358:1999 EN 361:2002 EN 1497:2007 CAT III</b>		<b>6 FABRIC: 100% POLYESTER</b>	
<b>7 MANUFACTURER: PORTWEST</b>		<b>8 Westport, County Mayo, Ireland</b>		<b>9</b>	
<b>10</b>		<b>11</b>		<b>12</b>	
<b>13</b>		<b>14</b>		<b>15</b>	
<b>16</b>		<b>17</b>		<b>18</b>	

Please complete the following <b>EQUIPMENT RECORD</b> and keep this record for reference.		
PRODUCT NAME: MODEL & TYPE/IDENTIFICATION:		
TRADE NAME:		SERIAL NUMBER:
MANUFACTURER: ADDRESS:		TEL, FAX, EMAIL AND WEBSITE:
YEAR OF MANUFACTURE / LIFE EXPIRY DATE:	PURCHASE DATE:	DATE FIRST PUT INTO USE:
COMMENTS:		USER NAME:
Other relevant information (eg. European Standard number):		
Other components suitable for use together in the fall arrest system are:		

DATE	REASON FOR ENTRY (PERIODIC EXAMINATION)	DEFECTS NOTED, REPAIRS CARRIED OUT AND OTHER RELEVANT INFORMATION.	NAME AND SIGNATURE OF COMPETENT PERSON	PERIODIC EXAMINATION NEXT DUE DATE

The personal protective equipment shall be examined at least every 12 months by a competent person.